

Assisted Living Tower



© 2014 Shorehaven. All rights reserved. Shorehaven and cross symbol design are trademarks of Shorehaven, Oconomowoc, WI 53066 | 2018 Rates

Optional Services (available for additional charge):

- Additional one meal per day
- Daily housekeeping
- Personal laundry
- General medication assistance
- Complex medication assistance
- ADL assistance
- Assistance with bathing
- Special whirlpool spa
- Dietary needs (therapeutic altering/meal assistance)
- Behavioral cuing/management
- Incontinence care
- Catheter care (voiding)
- Blood sugar monitoring
- Computer set up & technical support

Other Services* (available for additional charge):

- Short-term specialized care
- Carry out/tray service
- Hair care services
- Extra housekeeping (includes supplies)
- Extra maintenance
- Guest meal
- Shorehaven phone service
- PT, OT, & ST onsite (prices available upon request)
- Dental, podiatry, optometry & ENT services

*Supplies not included unless otherwise indicated Service and fees are subject to change

Assisted Living - Offering Freedom of Choice in a Beautiful Residential Setting

Shorehaven Tower is a gracious and homelike complex where highly skilled and compassionate staff, including two nurses, cater to each person's needs. Those who live here enjoy their choice of care services, menus, activities and amenities on a convenient and price-friendly a la carte basis. Weekly housekeeping, lake views, family rooms, dining room, cable TV, WiFi access, and more are offered.

Shorehaven Assisted Living Tower

1305 W. Wisconsin Avenue, P.O. Box 208
Oconomowoc, WI 53066-0208

(262) 567-8341 • (262) 567-0273 Fax
info@shorehavenliving.org • www.shorehavenliving.org

Shorehaven is a smoke-free campus



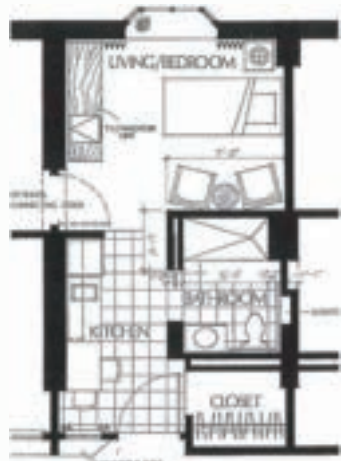
Shorehaven Tower residents choose from seven different floor plans

Apartment Rent Includes:

- A variety of apartment plans; call for availability
- Two meals per day
- All utilities
- Trained staff on duty 24 hours/day
- Community activities and shopping trips
- Free use of washers/dryers
- Weekly housekeeping
- Weekly linens change
- Emergency Response System
- Wellness clinic/health monitoring
- WiFi
- Cable TV
- Transportation arrangements
- Mail delivery to door
- Flu shot clinic onsite
- Routine apartment maintenance

Apartments Feature:

- Private bathroom with walk-in shower
- Kitchen
- Individually controlled heating and air-conditioning
- Bay windows
- Vertical blinds
- Carpeting
- Storage closet
- No entrance fee or security deposit
- Pets welcome



Unit A - Studio
325 square feet
\$2,651/month



Unit B - Studio
450 square feet
\$3,359/month



Unit C - 1 Bedroom
465 square feet
\$3,536/month



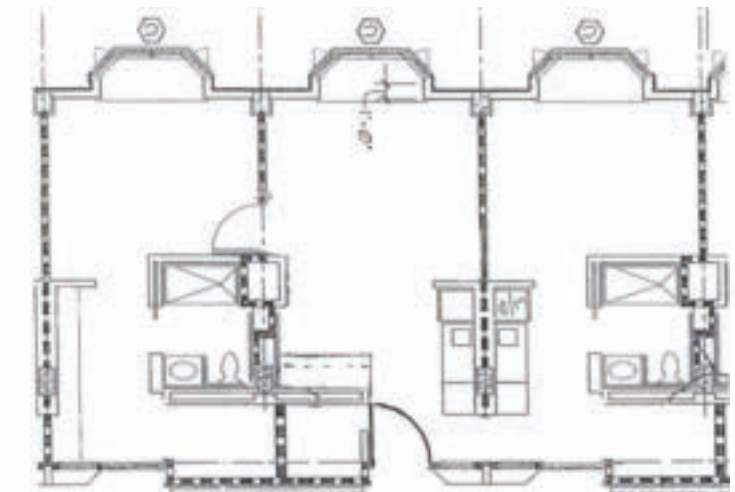
Unit D - 1 Bedroom
540 square feet
\$4,248/month



Unit E - 1 Bedroom
650 square feet
\$4,860/month



Unit F - 1 Bedroom
775 square feet
\$5,065/month



Unit G - 2 Bedroom
975 square feet
\$5,252/month

Shorehaven Tower Offers:

- Onsite chapel with individual pastoral care from full time chaplain
- Fitness center & indoor pool
- Library
- General store and gift shop
- Beauty/barber shop
- Onsite banking
- Lab, podiatry, dental, eye and ear services
- Large activity center
- In-house broadcasts
- Facility-operated phone system
- Spa Services
- Some apartments with washer and dryer
- Public Café LaBelle and access to Center for Life Enrichment
- Continuum of care
- Lake access on beautiful Lac La Belle
- Parking space available
- Concierge services
- Onsite daily therapy services
- Outdoor patio with grill and fire pit
- Access to Service League Pavilion with full kitchen