



© 2014 Shorehaven. All rights reserved. Shorehaven and cross symbol design are trademarks of Shorehaven, Oconomowoc, WI 53066 | 2018 Rates

Optional Services (available for additional charge):

- Additional one meal per day
- Daily housekeeping
- Personal laundry
- General medication assistance
- Complex medication assistance
- ADL assistance
- Assistance with bathing
- Special whirlpool spa
- Dietary needs (therapeutic altering/meal assistance)
- Behavioral cuing/management
- Incontinence care
- Catheter care
- Diabetic care (blood sugar monitoring)
- Computer set up & technical support

Other Services* (available for additional charge):

- Short-term specialized care
- Carry out/tray service
- Hair care services
- Extra housekeeping (includes supplies)
- Extra maintenance
- Guest meal
- Shorehaven phone service
- PT, OT, & ST onsite (prices available upon request)
- Dental, podiatry, optometry & ENT services
- Nurse assistance with pacer check

*Supplies not included unless otherwise indicated Service and fees are subject to change

Shorehaven Assisted Living Tower

1305 W. Wisconsin Avenue, P.O. Box 208
Oconomowoc, WI 53066-0208

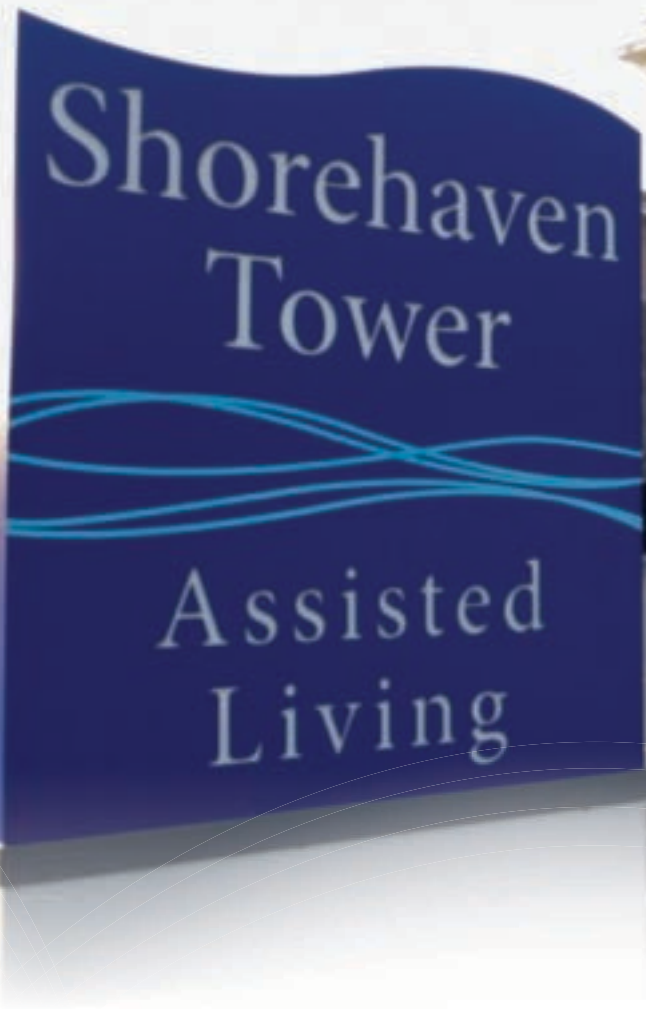
(262) 567-8341 • (262) 567-0273 Fax
info@shorehavenliving.org • www.shorehavenliving.org

Shorehaven is
a smoke-free
campus





Shorehaven
Trusted for Generations



Assisted Living Tower

Assisted Living - Offering Freedom of Choice in a Beautiful Residential Setting

Shorehaven Tower is a gracious and homelike complex where highly skilled and compassionate staff, including two full-time nurses, cater to each person's needs. Those who live here enjoy their choice of care services, menus, activities and amenities on a convenient and price-friendly a la carte basis. Weekly housekeeping, lake views, family rooms, dining room, cable TV, WiFi access, and more are offered.

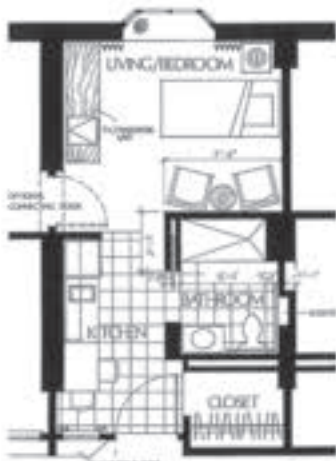
Shorehaven Tower residents choose from seven different floor plans

Apartment Rent Includes:

- A variety of apartment plans; call for availability
- Two meals per day
- All utilities
- Trained staff on duty 24 hours/day
- Community activities and shopping trips
- Free use of washers/dryers
- Weekly housekeeping
- Weekly linens change
- Emergency Response System
- Wellness clinic/health monitoring
- WiFi
- Cable TV
- Transportation arrangements
- Mail delivery to door
- Flu shot clinic onsite
- Routine apartment maintenance

Apartments Feature:

- Private bathroom with walk-in shower
- Kitchen
- Individually controlled heating and air-conditioning
- Bay windows
- Vertical blinds
- Carpeting
- Storage closet
- No entrance fee or security deposit
- Pets welcome



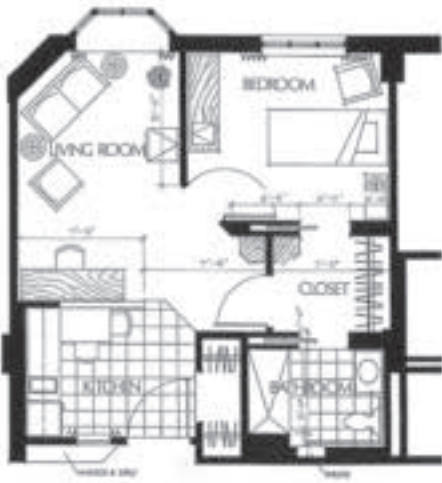
Unit A - Studio
325 square feet
\$2,499/month



Unit B - Studio
450 square feet
\$3,166/month



Unit C - 1 Bedroom
465 square feet
\$3,333/month



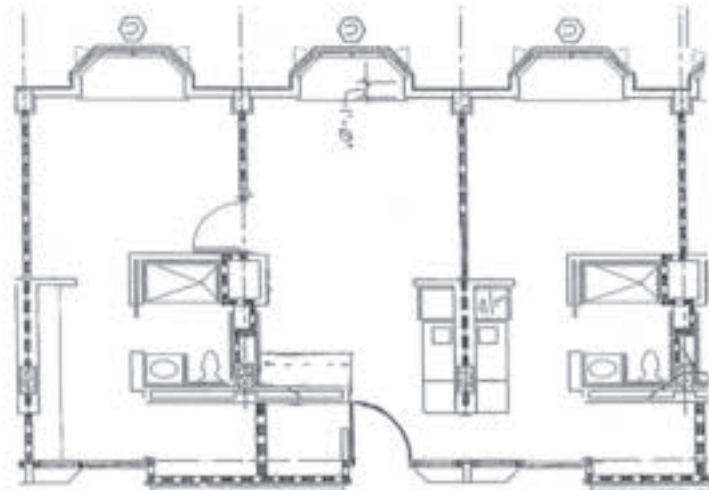
Unit D - 1 Bedroom
540 square feet
\$4,004/month



Unit E - 1 Bedroom
650 square feet
\$4,581/month



Unit F - 1 Bedroom
775 square feet
\$4,774/month



Unit G - 2 Bedroom
975 square feet
\$4,950/month

Shorehaven Tower Offers:

- Onsite chapel with individual pastoral care from full time chaplain
- Fitness center
- Library
- General store and gift shop
- Beauty/barber shop
- Onsite banking
- Lab, podiatry, dental, eye and ear services
- Large activity center
- In-house broadcasts
- Facility-operated phone system
- Spa Services
- Some apartments with washer and dryer
- Public Café LaBelle and access to Center for Life Enrichment
- Continuum of care
- Lake access on beautiful Lac La Belle
- Parking space available
- Concierge services
- Onsite daily therapy services
- Outdoor patio with grill and fire pit